

IPA (IKEA Print Application) Release notes

Version 2024.10.18 (Release date: 08.11.2024)

1. Updated ULL – Print application

New feature **Country of Origin** is available under Label settings: Drop-down will display all available Country of Origin options (visible only for relevant suppliers and relevant label templates)

Country of Origin

- Default
- Made in the USA
- Made in the US of Imported Materials
- Made in U.S. from Imported Parts
- Assembled in the US of imported materials
- Assembled in USA

Version 2024.08.14 (Release date: 28.9.2024)

2. Updated ULL – Print application

New feature **Show all DWP data** is available: Products can have different DWP Number and DWP Edition data in database. By default version with highest combination is shown. When you enable this option you can see all other DWP No and DWP Ed values for all products.

ULL - Print

Report a problem

LABEL TEMPLATE

- ULL 105.nlbl
- ULL 105 v1.nlbl
- ULL 148.nlbl
- ULL 148 v1.nlbl
- ULL 148 v2.nlbl
- ULL 148 v3.nlbl

DATE 25.9.2024 **WEEK** 39

SEARCH: Show All DWP Data

Item	Description	Item/Pal	Weight
00162380	MARIUS stool 45 black AP JP	156	259
00246196	MARIUS N stool 45 red	156	287
00330661	NESTTUN head+footb 120 white AP CN	11	165
00361493	HAMMARN sb Knisa dark grey/black GB	9	239
00375126	VANGSTA ext tbl 80/120x70 white	12	287
00398788	RÖNNSKÄR cr shlf ut white	32	331
00420949	SAGSTUA head+footb 150 black AP	9	193
00424363	FYRESDAL N day-bed frm 80x200 black AP	6	265
00492677	KLEPPSTAD bed frm 140x200 white/Vissle beige	15	503
00492682	KLEPPSTAD bed frm QN white/Vissle beige N...	15	516
00505528	VEVELSTAD bed frm 140x200 white	20	560
00506387	VEVELSTAD bed frm 140x200 white AP	20	560
00506392	VEVELSTAD bed frm 180x200 white AP	20	684
00506424	VEVELSTAD bed frm FUDDU white MAAL	20	542

PRINTER Microsoft Print to PDF

QUANTITY (different SSCC labels) 1

LABEL PRINT PREVIEW

Unit Load Stacking Capacity: **388 kg**

Unit Load foot print: **1140 mm x 770 mm**

001.623.80

Supplier: 15540 Quantity: 156 Date stamp: 2439

Gross Weight **259 kg**

(240)0016238015540(91)2439(30)156

(00)969745908900510918

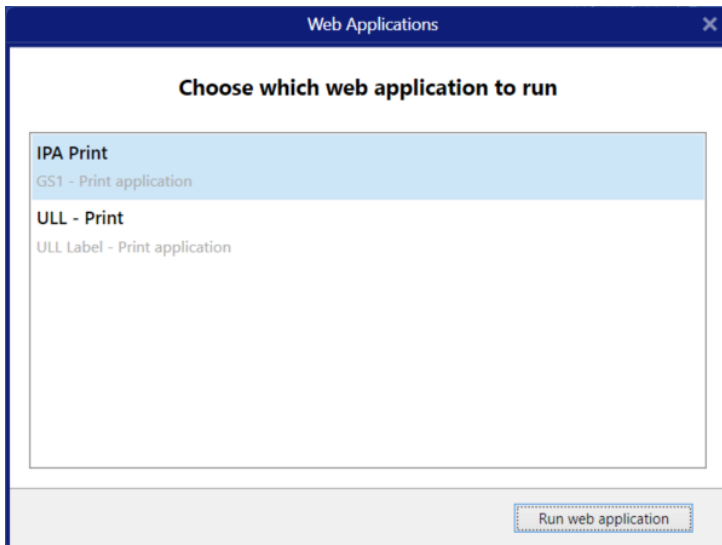
Computer Name: [redacted]
User Name: [redacted]
Program version: v2024.08.14 / 21.3.0.10814

PROD Environment

3. Deployment of ULL – Print application

Supplier is able to select ULL – Print application (if assigned):

1. IPA – Print for printing Product identification labels
2. ULL – Print for printing Pallet labels



4. Check if NOTO IKEA fonts are installed

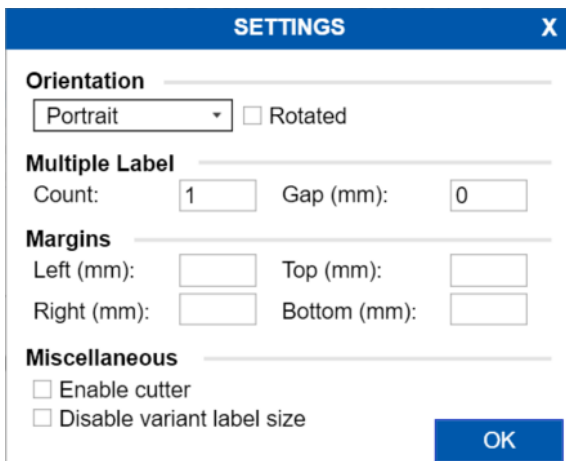
During application start procedure system will check if required NOTO IKEA fonts are installed on your PC:

- NotoIKEAKorean-Bold.ttf
- NotoIKEAKorean-Regular.ttf
- NotoIKEALatin-Bold.ttf
- NotoIKEALatin-BoldItalic.ttf
- NotoIKEALatin-Italic.ttf
- NotoIKEALatin-Regular.ttf

If fonts are not installed the Information pop-up message will notify you that missing fonts will be downloaded from Control Center document storage.

5. Label settings new feature

Rotate feature enables rotation of the label for 180 degrees.



6. New feature Notifications

On right side of IPA web printing application first Menu screen there's new Notification message(s) displayed about planned updates, maintenance downtime,.. (if active).

Main Menu Janez Bevk

PRODUCT LABELLING

Label Print

Print Logs & Reprint

Subject: Other general information
Duration: 08.06.2024 08:00 to 23.06.2024 23:59
Hey!!!
We're glad to inform you that the following features will be available in IKEA Print Application starting 08-June-2024.
1. Rotate feature in "LABEL SETTINGS" which rotate the label to 180 degrees for the orientation selected.
2. During application start procedure system will check if required NOTO IKEA fonts are installed on your PC.

Subject: Other general information
Duration: 08.06.2024 08:01 to 30.06.2024 00:00
IKEA Print Application for printing Unit Load Label will be available starting 17-June-2024.
For more information, please contact your superuser.

NiceLabel PROD Environment v2024.06.05d / 24.2.0.12904

Same Notification(s) messages are available also in Label print window in upper right corner (if active).

Janez Bevk

[Report a problem](#)

ch

All

i

1. IPA deployment in APAC datacentre

To enable better performance for suppliers in APAC region, IPA application solution was deployed to APAC datacentre.

Suppliers could now launch IPA application from 2 datacentres:

- <https://IKEA.onnicelabel.com> (Datacentre in Europe recommended for suppliers located in Europe) or
- <https://IKEA-AP.onnicelabel.com> (Datacentre in APAC recommended for suppliers located in Asia-Pacific)

2. Unlimited quantity to support label store and recall

Unlimited checkbox was added to IPA application. Enabling this option will send unlimited number of labels to the printer. That functionality is usually used for marking printers (label store and recall).

The screenshot shows the 'LABEL PRINT' interface. At the top, there's a 'Back' button and the 'LABEL PRINT' title. Below that, there are search filters for Supplier, Item Name, Label Type (CP, MP, PI), and SIR State (Implemented, Accepted, Review, Rel to Sup). A table lists items with columns for CPN, Item No., Item Name, Label Name, Doc. Name, Application method, and State. Below the table, there are settings for Prefix, Date (01.03.2024), Suffix, Data Matrix (Square), Product information (Complete label), Color dot (Show color dot with number), Number (Show number), and Preview mode (Overlay). A 'Label Preview' section shows a sample label for 'TUFJORD' with a barcode, QR code, and various technical details. At the bottom, there's a 'Select Printer' dropdown (ZEBRA ZT421-300dpi ZPL), a 'Print Quantity' field (1) with an 'Unlimited' checkbox, and a 'Print' button. The footer includes 'Computer Name', 'User Name', and 'PROD-AP Environment v2024.02.16a / 21.3.0.10900'.

CPN	Item No.	Item Name	Label Name	Doc. Name	Application method	State
1	00438275	VINLIDEN 2-seat sec GB	1R35-IDADM,NUA	PI-448997-1	Adhesive or Printed	Implemented
1	00300433	STRANDMON fst Skiftebo yellow AP JP	1R35-COA,IDADM	PI-449005-1	Adhesive or Printed	Implemented
1	00446402	TUFJORD upholst bed frm 140x200 Gunnared blue	1R20-COA,IDADM,NUA	PI-449021-1	Adhesive	Implemented
2	00446402	TUFJORD upholst bed frm 140x200 Gunnared blue	1R20-COA,IDADM,NUA	PI-449021-1	Adhesive	Implemented
3	00446402	TUFJORD upholst bed frm 140x200 Gunnared blue	1R20-COA,IDADM,NUA	PI-449021-1	Adhesive	Implemented
4	00446402	TUFJORD upholst bed frm 140x200 Gunnared blue	1R20-COA,IDADM,NUA	PI-449021-1	Adhesive	Implemented
1	00446416	TUFJORD upholst bed frm 180x200 Gunnared blue AP	1R20-COA,IDADM,NUA	PI-449031-1	Adhesive	Accepted

1. Deployment of Merged label feature

Merged labels functionality enables supplier to print Identification label with additional LCI information as merged label.

If Merged label functionality is enabled for supplier, additional button Label mapping is available in IPA print application. Click on Label mapping opens pop-up window where mapping could be performed for selected Item/Identification label.

The screenshot shows the 'Label Print' application interface. At the top, there is a 'Back' button and the 'LABEL PRINT' title. The IKEA logo and a 'Report a problem' link are in the top right. Below the title bar, there are search filters for Supplier (set to 'Ikea - Vanguard Industrial (Living)'), Item Name, Label Type (with checkboxes for CP, MP, PI), and SIR State (with checkboxes for Implemented, Accepted, Review, Rel to Sup). There are 'Search' and 'Clear All' buttons. Below the filters is a table with columns: CPN, Item No., Item Name, Label Name, Doc. Name, Application method, and State. The table contains 8 rows of data for 'LÅNGARYD' items. Below the table, there are additional filters for Prefix, Date (21.12.2023), Suffix, Data Matrix (Square), Product information (Complete label), Color dot (Show color dot with number), Number (Show number), and Preview mode (Overlay). A 'Label Preview' section shows a detailed view of a label for 'LÅNGARYD' furniture, including a product image, barcode (005.097.53), QR code, and technical specifications. A 'Label mapping' button is highlighted in a red box in the top right of the preview area. At the bottom, there are controls for 'Select Printer' (ZEBRA ZT421-300dpi ZPL), 'Print Quantity' (1), 'Label variant' (Original label), and a 'Print' button. The footer shows 'Computer Name', 'User Name', and version information 'v2023.12.19a / 21.3.0.10900'.

Supplier could request Merged label functionality by opening service request at IKEA on [IKEA ServiceNow](#) portal.

1. New sections/

a) **Product information.** If product information sections are enabled on the label then you could select from dropdown menu which section(s) of the label will be printed.

Product information:

Complete label
Complete label
Only static information
Only data matrix and date

Complete label option will print complete label

Prefix: Date: Suffix: Data Matrix: Product information: Color dot: Number: Preview mode:
07.09.2023 Square Complete label Show colour dot with number Show number Overlay

Label Preview:



Only static information will print only static part of the label (**without** Datamatrix and production date)

Prefix: Date: Suffix: Data Matrix: Product information: Color dot: Number: Preview mode:
07.09.2023 Square Only static information Show colour dot with number Show number Overlay

Label Preview:



Only data matrix and date will print just dynamic part of the label

Prefix: Date: Suffix: Data Matrix: Product information: Color dot: Number: Preview mode:
07.09.2023 Square Only data matrix and date Show colour dot with number Show number Overlay

Label Preview:



b) **Color dot.** For labels with Color dot you could made a selection which part of Color dot to be printed

Color dot:

Show colour dot with number ▾
 Show colour dot with number
 Show colour dot
 Hide colour dot

Show color dot with number is showing circle and colour number

Prefix: Date: Suffix: Data Matrix: Product information: Color dot: Number: Preview mode:
 05.09.2023 ▾ Square ▾ Complete label ▾ Show colour dot with number ▾ Show number ▾ Actual print ▾

Label Preview:



Show color dot is showing the circle and hides the colour number

Prefix: Date: Suffix: Data Matrix: Product information: Color dot: Number: Preview mode:
 05.09.2023 ▾ Square ▾ Complete label ▾ Show colour dot ▾ Show number ▾ Actual print ▾

Label Preview:



Hide color dot hides the circle and colour number

Prefix: Date: Suffix: Data Matrix: Product information: Color dot: Number: Preview mode:
 05.09.2023 ▾ Square ▾ Complete label ▾ Hide colour dot ▾ Show number ▾ Actual print ▾

Label Preview:



c) **Number:** For Items where multiple labels have to be printed (CPN>1) you could hide the package number.

Prefix: Date: Suffix: Data Matrix: Product information: Color dot: Number: Preview mode:
 05.09.2023 ▾ Square ▾ Complete label ▾ Show colour dot with number ▾ Hide number ▾ Actual print ▾

Label Preview:



2. **Enable cutter in Label Settings.** Opens the menu for Print settings:

SETTINGS X

Orientation

Portrait

Multiple Label

Count: 1 Gap (mm): 0

Margins

Left (mm): Top (mm):

Right (mm): Bottom (mm):

Miscellaneous

Enable cutter

OK

Enable cutter: This option will enable cutter mode: *Cut after every label*